

MAGNET LATCHING VALVES



Note: This valve also available as an operator. Refer to following page.

Series 15 >> Model 153

3-Way Normally Closed Magnet Latching Valve – Piped Exhaust

This type of valve is often used in remote areas where continuous power may not be available or with battery-powered portable equipment where power capacity is limited. It is also valuable in equipment where coil heating, due to continuous application of power, is undesirable. Air and other fluids are compatible with standard Buna seals. Hot water, steam, gasoline, oils, some hydraulic fluids, and many other media require other seal materials.

- **Small, lightweight and economical.**
- **Operating pressures from vacuum to 150 psi.**
- **Quality design and construction.**

OPERATING CONDITIONS

Media: Air, water, and other fluids are compatible with standard Buna seals. Hot water, steam, gasoline, and many oils require other seal materials. (Series 15 pressure ratings may change due to the viscosity of the liquid.)*

Valve Temperature Range: Standard Valves - 0°F (-18°C) to 104°F (40°C) ambient; 0°F (-18°C) to 150°F (65°C) media. Optional Valves - can tolerate much higher or much lower ambient and media temperatures.*

Maximum Operating Pressure Differentials: See table on next page.

Burst Pressure: 5,000 PSI

Leakage: Bubble tight for standard valves.

Vacuum: To 5 Microns*

ELECTRICAL CHARACTERISTICS

Coil Voltage: 12, 24/DC

Nominal Power: DC – 10.5 Watts

Coil Construction: Molded Class F. (155°C)

Typical Response Time on Air: Approximate 30 milliseconds pulse to energize and de-energize.

Operating Speed: Up to 600 CPM

MECHANICAL CHARACTERISTICS

Body: Anodized Aluminum (Std.)

Internal Components: Stainless Steel

Elastomers: Nitrile (Buna) (Std.). Many other elastomers available.*

Orifice Diameter: See table on next page.

Porting: 1/8" NPT (Std.)

Housing: Leadwires and DIN Style Connector.

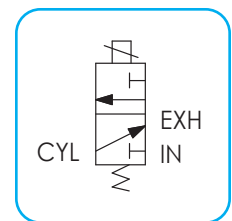
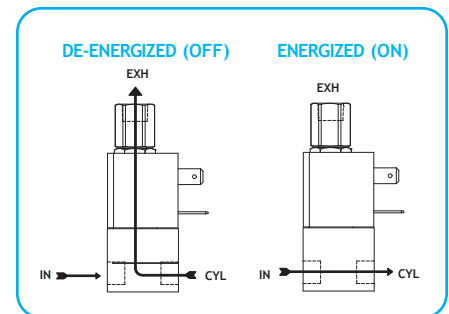
Life Expectancy: Millions of cycles, depending on application, lubrication, etc.

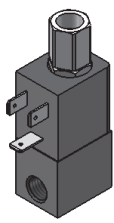
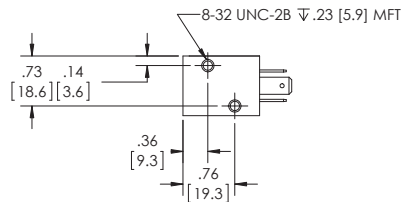
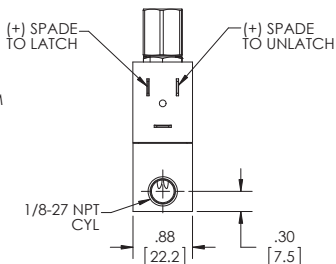
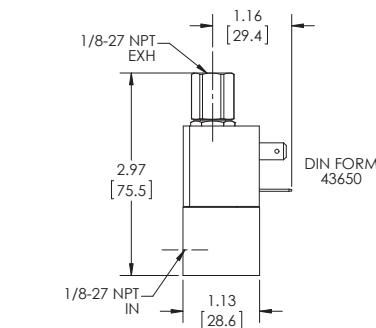
Valve Weight: 0.27 lb to 0.30 lb depending on model and housing style.

Repair Packs: See table on next page.

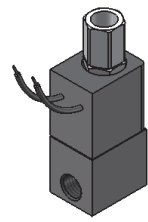
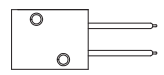
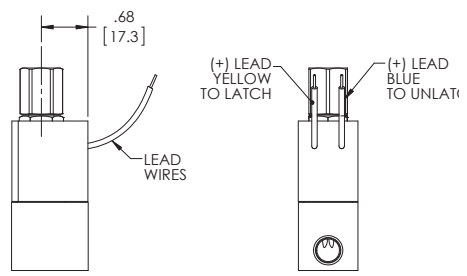
Options: Round Brass or Stainless Steel Body, Stackable Construction and Alternate Elastomers.

* Consult representative or factory for options and specifications.





**SERIES 15
MODEL 153
3WNC PIPED EXHAUST
DIN STYLE
MAGNETIC LATCHING**



**SERIES 15
MODEL 153
3WNC PIPED EXHAUST
MOLDED WITH LEADS
MAGNETIC LATCHING**

VALVE SPECIFICATIONS

MAX. OPER. PRESS. DIFF.	ORIFICE SIZE		CV FACTOR		VALVE NUMBER	
	DC	N.C.	N.O.	N.C.	N.O.	LEAD WIRE
150	1/32	1/32	.022	.020	153GG2XGLM	153GG2XELM
75	3/64	3/64	.055	.048	153HH2XGLM	153HH2XELM
55	1/16	1/16	.075	.075	153JJ2XGLM	153JJ2XELM
25	3/32	3/32	.130	.130	153KK2XGLM	153KK2XELM

ORDERING INFORMATION:

WHEN ORDERING VALVES OR REPAIR PACKS ADD VOLTAGE AND FREQUENCY TO COMPLETE VALVE NUMBER. EXAMPLES: VALVE (153JJ2XELM 12/DC) REPAIR PACK (K153JXLM DC)

WHEN ORDERING OPERATORS ADD THE LETTER "O" TO THE FRONT OF THE VALVE NUMBER, REPLACE BODY PORT NUMBER WITH THE LETTER "D": EXAMPLE: OPERATOR (O153JJ2DELDM 12/DC)