

3/2-directional valve, Series CD07

- 3/2
- Qn = 1400 l/min
- Pilot valve width : 30 mm
- NC/NO
- Pipe connection
- Compressed air connection output : G 1/4
- Electrical connection : Plug, EN 175301-803, form A, 3-pin
- - 25 °C cold-resistant
- Manual override : with detent without
- single solenoid
- With spring return
- Pilot : Internal External



Version	Spool valve, positive overlapping
Activation	Electrically
Sealing principle	Soft sealing
Working pressure min./max.	See table below
Control pressure min./max.	3 ... 10 bar
Ambient temperature min./max.	See table below
Medium temperature min./max.	See table below
Medium	Compressed air
Max. particle size	50 µm
Oil content of compressed air	0 ... 1 mg/m ³
Nominal flow Qn	1400 l/min
Nominal flow 1 ► 2	1400 l/min
Nominal flow 2 ► 3	1400 l/min
Compressed air connection	according to ISO 228-1
Pilot control exhaust	with directional pilot air exhaust
Connector standard	EN 175301-803:2006
Reverse polarity protection	Protected against polarity reversal
Compatibility index	13 14
Duty cycle	100 %
Weight	See table below

Technical data

Part No.		MO		Compressed air connection	
				Input	
5772070220			NC/NO	G 1/4	
5772075270			NC/NO	G 1/4	
5772075280			NC/NO	G 1/4	
5772072220			NC/NO	G 1/4	
5772075220			NC/NO	G 1/4	
5772075302			NC/NO	G 1/4	
5772080220			NC/NO	G 1/4	
5772085270			NC/NO	G 1/4	
5772085280			NC/NO	G 1/4	
5772085220			NC/NO	G 1/4	
5772085302			NC/NO	G 1/4	
R412004091			NC/NO	G 1/4	
R412004092			NC/NO	G 1/4	
5772960220		—	NC/NO	G 1/4	
5772965302		—	NC/NO	G 1/4	

Part No.	Compressed air connection	
	Output	Exhaust
5772070220	G 1/4	G 1/4
5772075270	G 1/4	G 1/4
5772075280	G 1/4	G 1/4
5772072220	G 1/4	G 1/4
5772075220	G 1/4	G 1/4
5772075302	G 1/4	G 1/4
5772080220	G 1/4	G 1/4
5772085270	G 1/4	G 1/4
5772085280	G 1/4	G 1/4
5772085220	G 1/4	G 1/4
5772085302	G 1/4	G 1/4
R412004091	G 1/4	G 1/4
R412004092	G 1/4	G 1/4
5772960220	G 1/4	G 1/4
5772965302	G 1/4	G 1/4

Part No.	Compressed air connection	
	Pilot Input	Pilot Exhaust
5772070220	-	-
5772075270	-	-
5772075280	-	-
5772072220	-	-
5772075220	-	-
5772075302	-	-
5772080220	G 1/8	M5
5772085270	G 1/8	M5
5772085280	G 1/8	M5
5772085220	G 1/8	M5

Part No.	Compressed air connection	Compressed air connection
	Pilot Input	Pilot Exhaust
5772085302	G 1/8	M5
R412004091	-	-
R412004092	G 1/8	M5
5772960220	-	-
5772965302	-	-

Part No.	Operational voltage	Operational voltage	Operational voltage
	DC	AC 50 Hz	AC 60 Hz
5772070220	24 V	-	-
5772075270	-	110 V	110 V
5772075280	-	230 V	230 V
5772072220	24 V	-	-
5772075220	-	24 V	24 V
5772075302	-	-	-
5772080220	24 V	-	-
5772085270	-	110 V	110 V
5772085280	-	230 V	230 V
5772085220	-	24 V	24 V
5772085302	-	-	-
R412004091	24 V	-	-
R412004092	24 V	-	-
5772960220	24 V	-	-
5772965302	-	-	-

Part No.	Voltage tolerance	Voltage tolerance	Voltage tolerance	Power consumption
	DC	AC 50 Hz	AC 60 Hz	DC
5772070220	-10% / +10%	-	-	2,1 W
5772075270	-	-20% / +10%	-10% / +20%	-
5772075280	-	-20% / +10%	-10% / +20%	-
5772072220	-20% / +30%	-	-	4,5 W
5772075220	-	-20% / +10%	-10% / +20%	-
5772075302	-	-	-	-
5772080220	-10% / +10%	-	-	2,1 W
5772085270	-	-20% / +10%	-10% / +20%	-
5772085280	-	-20% / +10%	-10% / +20%	-
5772085220	-	-20% / +10%	-10% / +20%	-
5772085302	-	-	-	-
R412004091	-10% / +10%	-	-	2,1 W
R412004092	-10% / +10%	-	-	2,1 W
5772960220	-10% / +10%	-	-	2,1 W
5772965302	-	-	-	-

Part No.	Holding power	Holding power	Switch-on power	Switch-on power	Pilot
	AC 50 Hz	AC 60 Hz	AC 50 Hz	AC 60 Hz	
5772070220	-	-	-	-	Internal
5772075270	4,3 VA	3,3 VA	6,8 VA	5,7 VA	Internal
5772075280	4,8 VA	4,1 VA	6,9 VA	5,8 VA	Internal
5772072220	-	-	-	-	Internal

Part No.	Holding power	Holding power	Switch-on power	Switch-on power	Pilot
	AC 50 Hz	AC 60 Hz	AC 50 Hz	AC 60 Hz	
5772075220	4,3 VA	3,2 VA	6,9 VA	5,6 VA	Internal
5772075302	-	-	-	-	Internal
5772080220	-	-	-	-	External
5772085270	4,3 VA	3,3 VA	6,8 VA	5,7 VA	External
5772085280	4,8 VA	4,1 VA	6,9 VA	5,8 VA	External
5772085220	4,3 VA	3,2 VA	6,9 VA	5,6 VA	External
5772085302	-	-	-	-	External
R412004091	-	-	-	-	Internal
R412004092	-	-	-	-	External
5772960220	-	-	-	-	Internal
5772965302	-	-	-	-	Internal

Part No.	Working pressure min./max.	Ambient temperature min./max.	Medium temperature min./max.
5772070220	3 ... 10 bar	-25 ... 50 °C	-25 ... 50 °C
5772075270	3 ... 10 bar	-25 ... 50 °C	-25 ... 50 °C
5772075280	3 ... 10 bar	-25 ... 50 °C	-25 ... 50 °C
5772072220	3 ... 10 bar	-25 ... 50 °C	-25 ... 50 °C
5772075220	3 ... 10 bar	-25 ... 50 °C	-25 ... 50 °C
5772075302	3 ... 10 bar	-25 ... 50 °C	-25 ... 50 °C
5772080220	-0,95 ... 10 bar	-25 ... 50 °C	-25 ... 50 °C
5772085270	-0,95 ... 10 bar	-25 ... 50 °C	-25 ... 50 °C
5772085280	-0,95 ... 10 bar	-25 ... 50 °C	-25 ... 50 °C
5772085220	-0,95 ... 10 bar	-25 ... 50 °C	-25 ... 50 °C
5772085302	-0,95 ... 10 bar	-25 ... 50 °C	-25 ... 50 °C
R412004091	3 ... 10 bar	-10 ... 50 °C	-10 ... 50 °C
R412004092	-0,95 ... 10 bar	-10 ... 50 °C	-10 ... 50 °C
5772960220	3 ... 10 bar	-25 ... 50 °C	-25 ... 50 °C
5772965302	3 ... 10 bar	-25 ... 50 °C	-25 ... 50 °C

Part No.	Typ. switch-on time	Typ. switch-off time	Protection class	basic valve with electrical connector
			with connection	
5772070220	25 ms	45 ms	IP65	-
5772075270	25 ms	45 ms	IP65	-
5772075280	25 ms	45 ms	IP65	-
5772072220	25 ms	45 ms	IP65	-
5772075220	25 ms	45 ms	IP65	-
5772075302	-	-	-	Basic valve without coil
5772080220	25 ms	45 ms	IP65	-
5772085270	25 ms	45 ms	IP65	-
5772085280	25 ms	45 ms	IP65	-
5772085220	25 ms	45 ms	IP65	-
5772085302	-	-	-	Basic valve without coil
R412004091	25 ms	45 ms	IP65	-
R412004092	25 ms	45 ms	IP65	-
5772960220	25 ms	45 ms	IP65	-
5772965302	-	-	-	Basic valve without coil

Part No.	Power consumption	ATEX	Weight
5772070220	-	-	0,54 kg
5772075270	-	-	0,54 kg
5772075280	-	-	0,54 kg
5772072220	Higher voltage tolerance	-	0,54 kg
5772075220	-	-	0,54 kg
5772075302	-	ATEX optional	-
5772080220	-	-	0,54 kg
5772085270	-	-	0,54 kg
5772085280	-	-	0,54 kg
5772085220	-	-	0,54 kg
5772085302	-	ATEX optional	-
R412004091	-	ATEX	0,54 kg
R412004092	-	ATEX	0,54 kg
5772960220	-	-	0,54 kg
5772965302	-	-	-

Nominal flow Qn at 6 bar and $\Delta p = 1$ bar, MO = Manual override

Technical information

The min. control pressure must be adhered to, since otherwise faulty switching and valve failure may result!

The pressure dew point must be at least 15 °C under ambient and medium temperature and may not exceed 3 °C .

The oil content of compressed air must remain constant during the life cycle.

Use only the approved oils from AVENTICS. Further information can be found in the "Technical information" document (available in the MediaCentre).

ATEX optional: ATEX version can be produced by combining the basic valve without coil with an ATEX coil. ATEX ID: see ATEX coils catalog page.

option valve: The input and output compressed air connections can be exchanged.

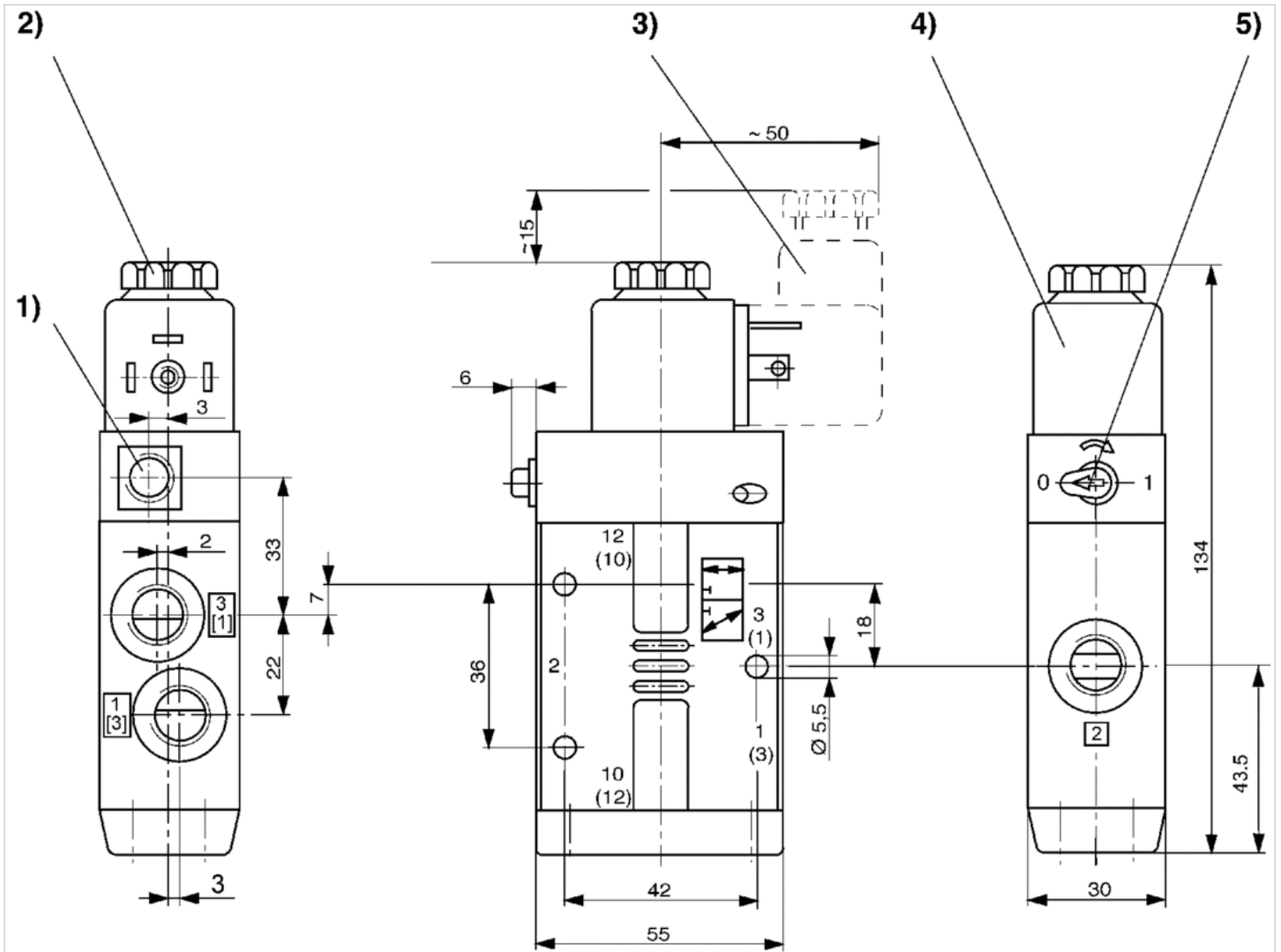
The valve can thereby be used in the NC or NO operating mode.

Technical information

Material	
Housing	Die cast zinc Polyamide, fiber-glass reinforced
Seals	Acrylonitrile butadiene rubber

Dimensions

Dimensions



1) Only with separate pilot control G 1/8 2) After removal of cap M5 internal thread 3) Valve plug connector 4) Coil can be plugged at 45° intervals 5) Manual override