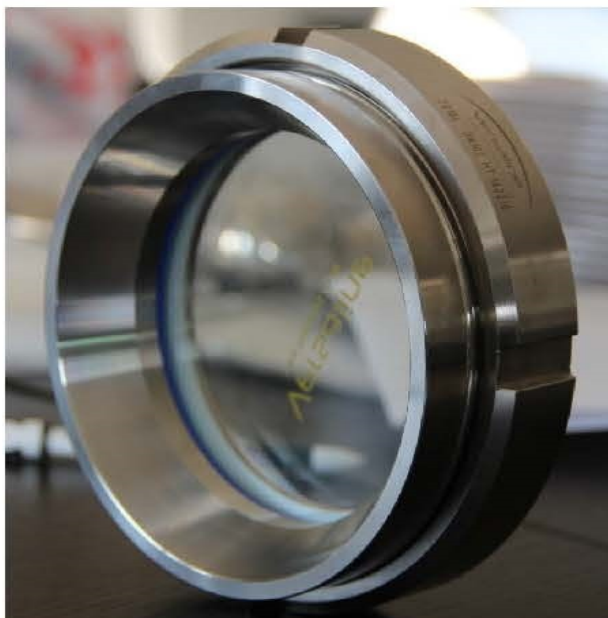


**SGT TYPE Weld in Sightglass DIN 8902**

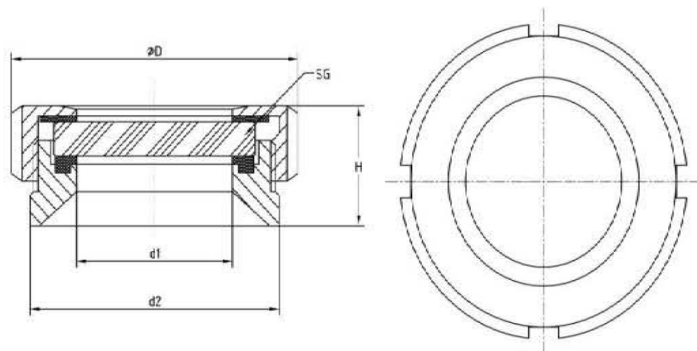


STANDARD SIZE    \* At temperature 50°C/122°F

| CODE                | D1  | D2      | SG        | D   | H  | P.R |
|---------------------|-----|---------|-----------|-----|----|-----|
|                     | MM  | MM      | MM        | MM  | MM | BAR |
| <b>SGT50DPB/89</b>  | 50  | 80 x 3  | 64.5 x 10 | 92  | 35 | 10  |
| <b>SGT60DPB/89</b>  | 65  | 95 X 3  | 85 X 10   | 108 | 39 | 10  |
| <b>SGT80DPB/89</b>  | 85  | 114 X 3 | 100 X 10  | 125 | 42 | 10  |
| <b>SGT100DPB/89</b> | 100 | 130 X 5 | 115 X 10  | 146 | 45 | 10  |

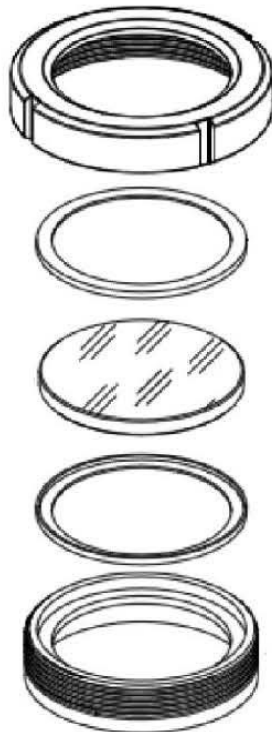
**\*1 Bar = 14.5PSI=0.1MPA**

**Manufactured to DIN8902**



# ZOEDALE

▶ *keeping industry flowing*



## Applications

The compact design of this unit makes it ideal for inspection use in small Bio- reactor vessels and the lids of Manways or inspection hatches.

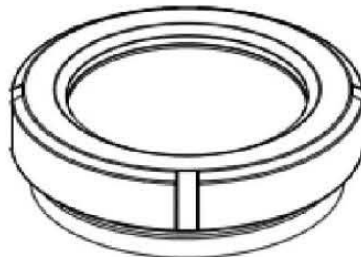
Used widely in the food,dairy,beverage, cosmetic and pharmaceutical industries.

## Operating Conditions

These units are available for pressures up to 10 BAR (depending on size,higher pressure ratings are available on request.)

## Parts List

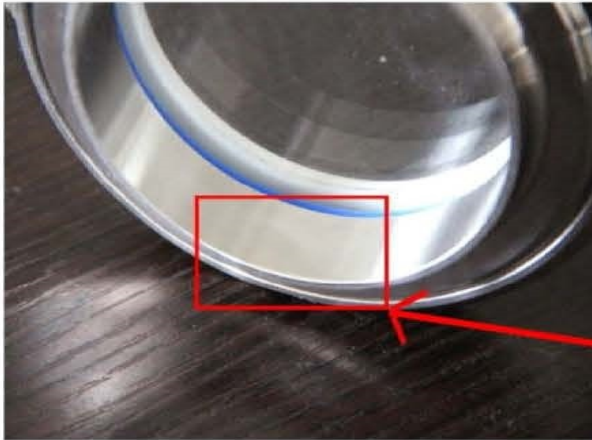
|                     |                          |                         |
|---------------------|--------------------------|-------------------------|
| 1: Welding male     | (1.4304/1.4404 material) |                         |
| 2: Nut              | (1.4301 material)        |                         |
| 3: Gasket           | Silicon                  | Max Temp<br>200 deg C   |
| 4: Sight glass disc | (Borosilicate)           | Max temp<br>260 deg C   |
| Working pressure    |                          | 10 bar                  |
| Certificates:       |                          | EN10204.3.1 certificate |



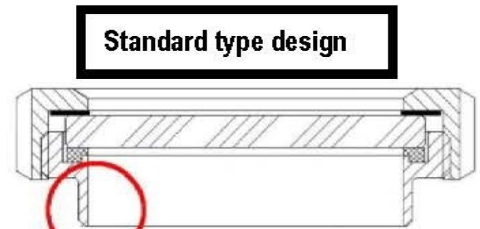
Zoedale Ltd - [www.zoedale.co.uk](http://www.zoedale.co.uk) 01234 832832

Subject to modification without notice in advance.

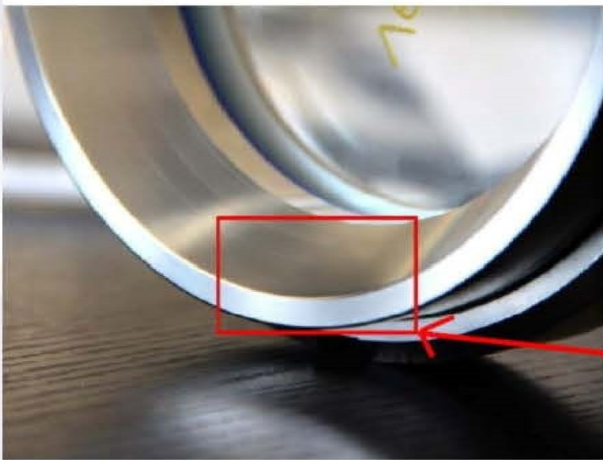
## SGT type Sightglass self draining design neck ring design comparison



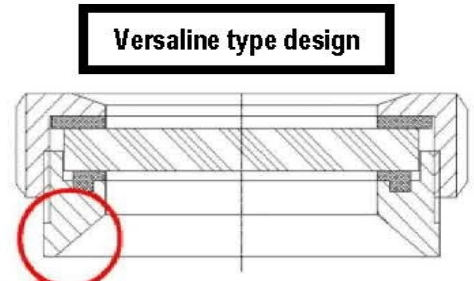
Standard straight edged design is a liquid trap when sight-glass is fitted to the side of a vessel.



**Standard type design**



The Versaline design eliminates the possibility of liquid build up due to its self draining capability.



**Versaline type design**